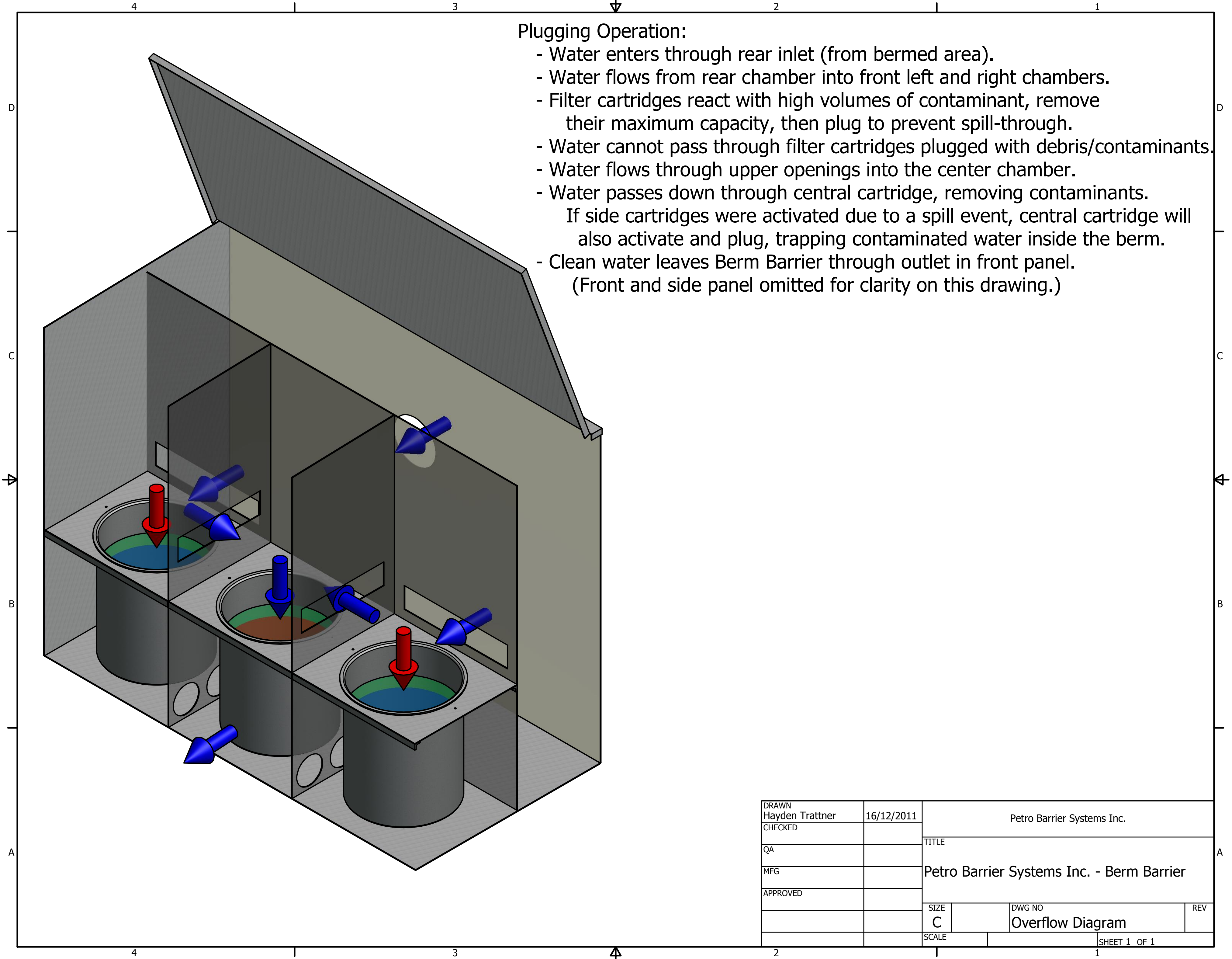


Plugging Operation:

- Water enters through rear inlet (from bermed area).
- Water flows from rear chamber into front left and right chambers.
- Filter cartridges react with high volumes of contaminant, remove their maximum capacity, then plug to prevent spill-through.
- Water cannot pass through filter cartridges plugged with debris/contaminants.
- Water flows through upper openings into the center chamber.
- Water passes down through central cartridge, removing contaminants.
- If side cartridges were activated due to a spill event, central cartridge will also activate and plug, trapping contaminated water inside the berm.
- Clean water leaves Berm Barrier through outlet in front panel.
- (Front and side panel omitted for clarity on this drawing.)



DRAWN Hayden Trattner	16/12/2011	Petro Barrier Systems Inc.		
CHECKED		TITLE		
QA		Petro Barrier Systems Inc. - Berm Barrier		
MFG		SIZE	DWG NO	REV
APPROVED		C	Overflow Diagram	
		SCALE	SHEET 1 OF 1	